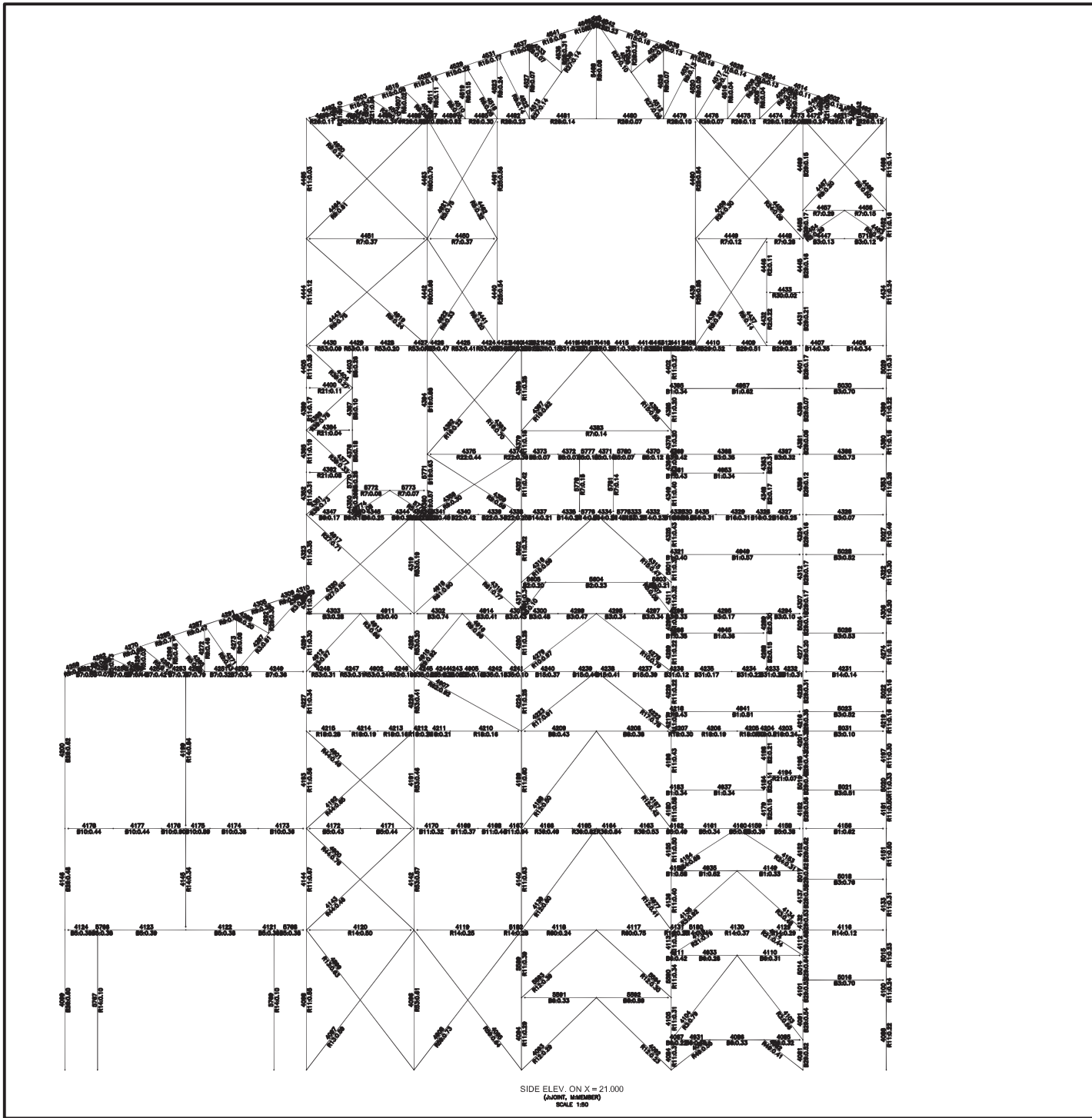


Summary of Steel Design Results:

Sample-Steel.ANL

Member	Section	Rem.	Ratio
1	UB457X191X98	PASS	0.399
2	UB457X191X98	PASS	0.458
3	ISA100X100X10 SP 0.008(SD)	PASS	0.704
4	ISA100X100X10 SP 0.008(SD)	PASS	0.661
5	UB457X191X98	PASS	0.471
6	UB457X191X98	PASS	0.460
7	UB457X191X98	PASS	0.489
8	ISMC150(FR)	PASS	0.094
9	UB457X191X98	PASS	0.451
10	UB457X191X98	PASS	0.483
11	ISA90X90X6 SP 0.008(SD)	PASS	0.635
12	ISA90X90X6 SP 0.008(SD)	PASS	0.587
13	UB457X191X98	PASS	0.338
14	UB457X191X98	PASS	0.266
15	ISMC150(FR)	PASS	0.068
16	UB457X191X98	PASS	0.253
17	UB457X191X98	PASS	0.317
18	ISA75X75X8 SP 0.008(SD)	PASS	0.624
19	ISA75X75X8 SP 0.008(SD)	PASS	0.595
20	UB457X191X98	PASS	0.244
21	UB457X191X98	PASS	0.190
22	UB254X146X31	PASS	0.042
23	UB457X191X98	PASS	0.220
24	UB457X191X98	PASS	0.212
25	ISA65X65X6 SP 0.008(SD)	PASS	0.566
26	ISA65X65X6 SP 0.008(SD)	PASS	0.627
27	UB457X191X98	PASS	0.155
28	ISMC150(FR)	PASS	0.063
29	UB457X191X98	PASS	0.148
30	UB457X191X98	PASS	0.216
31	ISA75X75X6 SP 0.008(SD)	PASS	0.454
32	ISA75X75X6 SP 0.008(SD)	PASS	0.506
33	UB457X191X98	PASS	0.190
34	ISMC100(FR)	PASS	0.092
35	UB457X191X98	PASS	0.190
36	UB457X191X98	PASS	0.205
37	ISA65X65X6 SP 0.008(SD)	PASS	0.565
38	ISA65X65X6 SP 0.008(SD)	PASS	0.638
39	UB457X191X98	PASS	0.186
40	ISMC150(FR)	PASS	0.089
41	UB457X191X98	PASS	0.189
42	UB457X191X98	PASS	0.187
43	ISA65X65X6 SP 0.008(SD)	PASS	0.505
44	ISA65X65X6 SP 0.008(SD)	PASS	0.579
45	UB457X191X98	PASS	0.152
.			
.			
.			
.			
.			



SIDE ELEV. ON X = 21.000
(AJON, HANSEN)
SCALE: 1/50

SECTION LIST:

MARK	SECTION
B1	UB203X133X25
B10	UB356X171X51
B11	UB356X171X57
B12	UB356X171X67
B13	UB406X178X54
B14	UB406X178X60
B15	UB406X178X67
B16	UB406X178X74
B17	UB457X191X67
B18	UB457X191X74
B19	UB457X191X82
B2	UB203X133X30
B20	UB457X191X89
B21	UB457X191X98
B22	UB533X210X82
B23	UB533X210X92
B24	UB533X210X101
B25	UB533X210X109
B26	UB533X210X122
B27	UB610X229X101
B28	UB610X229X113
B29	UB610X229X125
B3	UB254X146X31
B31	HE600A
B32	HE700A
B33	HE600M
B34	HE700M
B35	HE600B
B36	HE700B
B4	UB254X146X37
B5	UB254X146X43
B6	UB305X165X40
B7	UB305X165X46
B8	UB305X165X54
R1	ISA100X100X10 SP 0.008(SD)
R10	ISA100X100X10 SP 0.01(SD)
R11	STR750
R12	ISA150X150X18 SP 0.01(SD)
R13	ISA200X200X15 SP 0.01(SD)
R14	ISMC200(FR)
R15	ISA130X130X10 SP 0.01(SD)
R16	ISA110X110X10 SP 0.01(SD)
R17	ISA130X130X10 SP 0.008(SD)

SECTION LIST:

MARK	SECTION
R18	BUP650
R19	ISA110X110X10 SP 0.008(SD)
R2	ISMC150(FR)
R20	ISA100X100X8
R21	ISA65X65X6
R22	ISMC125(FR)
R23	ISA130X130X12 SP 0.01(SD)
R24	ISA100X100X8 SP 0.008(SD)
R25	ISMC400(FR)
R26	SMC400 SP 0.008(D)
R27	ISA110X110X12 SP 0.01(SD)
R28	ISA50X50X6
R29	ISMC125
R3	ISA90X90X6 SP 0.008(SD)
R30	ISMC100
R31	ISMC250
R32	BUP600
R33	BUP600A
R34	ISMC200
R35	ISA110X110X12 SP 0.012(SD)
R36	UB356X171X45
R37	UB533X210X122 WP 0.2 TH 0.008(TB)
R38	ISA75X75X6
R39	ISA90X90X8
R4	ISA75X75X8 SP 0.008(SD)
R40	DUB650
R41	ISMC300
R42	ISMC75
R43	ISA150X150X15 SP 0.012(SD)
R44	ISA150X150X12 SP 0.01(SD)
R45	BUP1000
R46	MC400BB312
R47	BUP600B
R48	ISA150X150X15 SP 0.01(SD)
R49	ISA50X50X6 SP 0.008(SD)
R5	ISA65X65X6 SP 0.008(SD)
R50	ISA200X200X12 SP 0.008(SD)
R51	STR900
R52	UB610X229X140 WP 0.2 TH 0.008(TB)
R53	UB610X229X140
R54	HE700M WP 0.15 TH 0.008(TB)
R55	ISMC250(FR)
R56	UB406X178X60 WP 0.2 TH 0.012(TB)

SECTION LIST:

MARK	SECTION
R57	ISA150X150X10 SP 0.01(SD)
R58	UB610X229X140 WP 0.12 TH 0.008(TB)
R59	ISA200X200X15 SP 0.012(SD)
R6	ISA75X75X6 SP 0.008(SD)
R60	ISMC300(FR)
R61	ISA110X110X12 SP 0.008(SD)
R62	ISA150X150X10 SP 0.008(SD)
R63	ISA100X100X12 SP 0.01(SD)
R64	ISA90X90X6
R7	ISMC100(FR)
R8	ISMC150
R9	ISA90X90X8 SP 0.008(SD)