

😊 DecaPlot Beam & Slab BBS Trimmed



Project

Start New
Project

Import
Existing Project

Export
Current Project

DecaPlot Beam Drawing



Beam Data



Project List



Beam Drawing

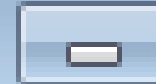
B1 (Old)

Deca Soft Engineers (M) 98112 61580

Exit



DecaPlot Beam Drawing



Default Options

Drawing Options

Exit

Default Tor Dia. Symbol

Default Leader Type for R/F Marking

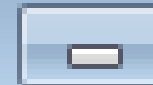
Default R/F Line Thickness

Default Title Block Sizes

Default Drawing Filling



DecaPlot Beam Drawing



Default Options

Drawing Options

Exit

Sheet Size

Scales

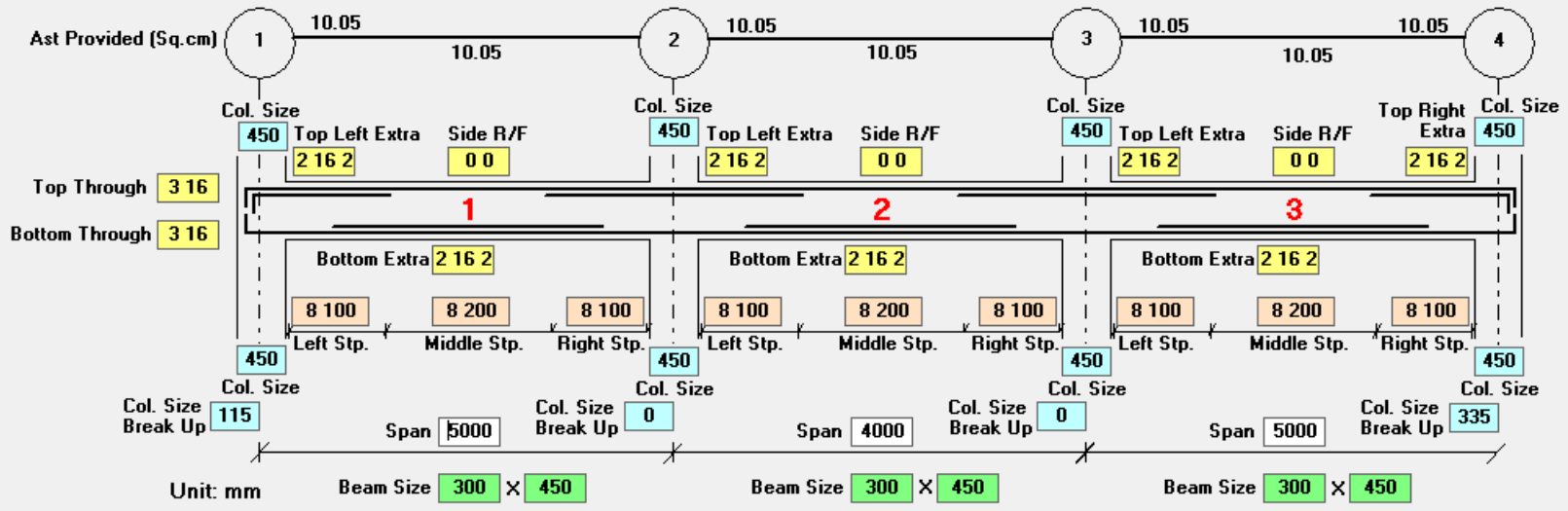
Clear Covers

Options

Rounding

Text Sizes

Notes



Unit: mm

Beam Size 300 x 450

Slab Thickness & Sunk

120	120
Front	Back

Legend:

Bar Details: Total No. of Bars - Dia. - No. of Bars in Second

Side R/F: Total No. of Bars - Dia.

Stirrups: Dia. - Spacing - Legs

Slabs: Thickness - Sunk Distance

- Beam Size Same
- Column Size Same
- Stirrups Same
- Slab Thickness Same

Initialise Project List Add Beam to Project List

Beam Mark B3

Cross Beam Details

Cancel

Save

Save & Exit

BAR BENDING SCHEDULE:

BAR MARK	TYPE	DIA. (MM)	A (MM)	B (MM)	C (MM)	D (MM)	E	LENGTH (MM)	NOS.	WEIGHT (KG)
(1)	U	16	5250	477	477	--	--	6108	2	19.3
(2)	ST	12	4000	--	--	--	--	4000	2	7.1
(3)	U	16	5250	477	477	--	--	6108	2	19.3
(4)	L	12	1525	289	--	--	--	1778	1	1.6
(5)	L	12	1525	289	--	--	--	1778	1	1.6
(6)	LINK	8	250	350	80	--	--	1380	24	12.9
(7)	L	16	14180	654	--	--	--	14786	3	70.0
(8)	ST	16	3668	--	--	--	--	3668	2	11.6
(9)	L	16	14180	654	--	--	--	14786	3	70.0
(10)	L	16	1648	327	--	--	--	1927	2	6.1
(11)	ST	16	2673	--	--	--	--	2673	2	8.4
(12)	LINK	8	250	400	80	--	--	1480	64	36.9
(13)	ST	16	2800	--	--	--	--	2800	2	8.8
(14)	ST	16	2673	--	--	--	--	2673	2	8.4
(15)	ST	16	3667	--	--	--	--	3667	2	11.6
(16)	L	16	1648	327	--	--	--	1927	2	6.1
									TOTAL WT.	299.7

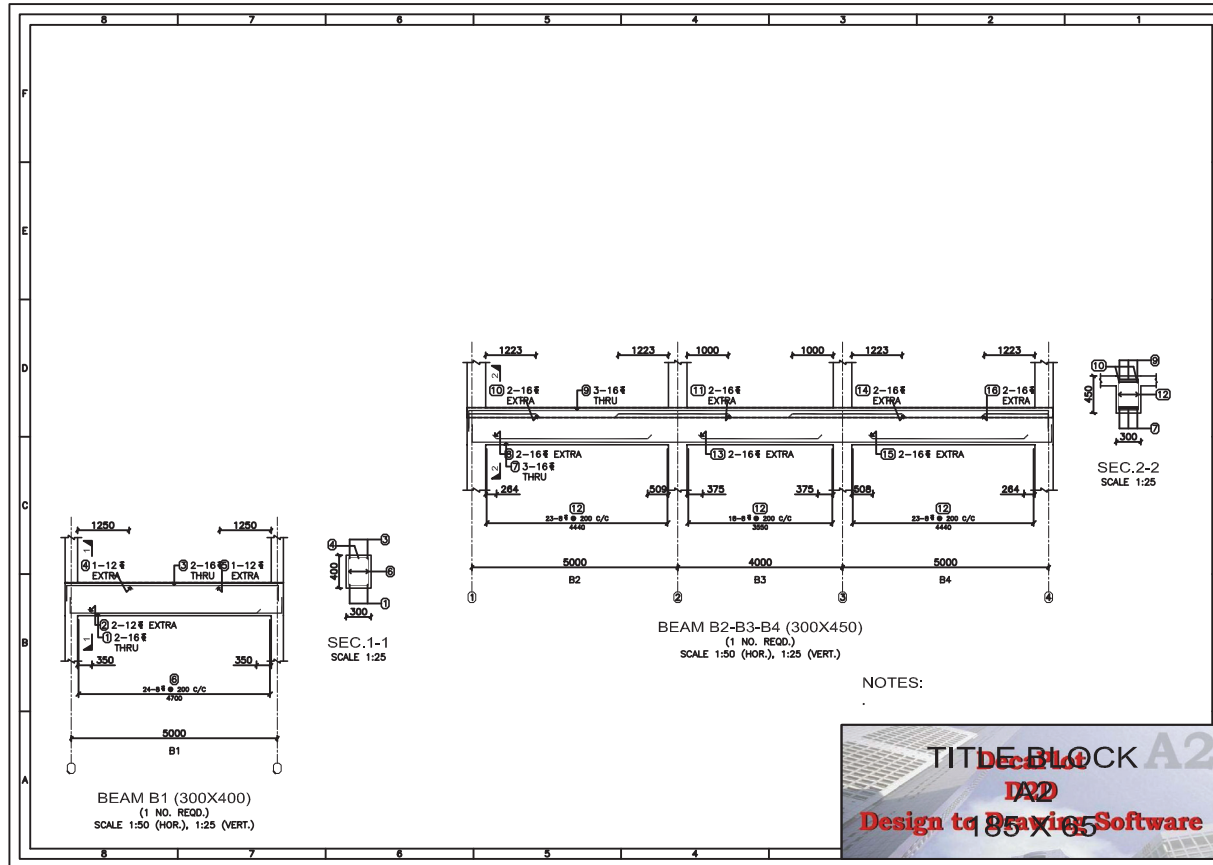
BAR SHAPES: SUMMARY:

TYPE	SHAPE
ST	A
L	B
U	C
LINK	D

DIA. (MM)	WEIGHT (KG)
8	49.8
12	10.3
16	239.6
TOTAL	299.7

BILL OF QUANTITIES:

ITEM	QUANTITY
CONCRETE	2.5 CU.M
STEEL R/F	299.7 KG



BEAM DRAWING

BAR MARK	TYPE	DIA. (MM)	A (MM)	B (MM)	C (MM)	D (MM)	E (MM)	LENGTH (MM)	NOS.	WEIGHT (KG)		
1	U	16	5250	477	477			6108	2	19.3	B1	
2	ST	12	4000					4000	2	7.1		
3	U	16	5250	477	477			6108	2	19.3		
4	L	12	1525	289				1778	1	1.6		
5	L	12	1525	289				1778	1	1.6		
6	LINK	8	250	350	80			1360	24	12.9		
7	L	16	14180	654				14786	3	70.0	B2	
8	ST	16	3668					3668	2	11.6		
9	L	16	14180	654				14786	3	70.0		
10	L	16	1648	327				1927	2	6.1		
11	ST	16	2673					2673	2	8.4		
12	LINK	8	250	400	80			1460	64	36.9		
13	ST	16	2800					2800	2	8.8		
14	ST	16	2673					2673	2	8.4		
15	ST	16	3667					3667	2	11.6		
16	L	16	1648	327				1927	2	6.1		
										299.7		
										8	49.8	
										12	10.3	
										16	239.6	